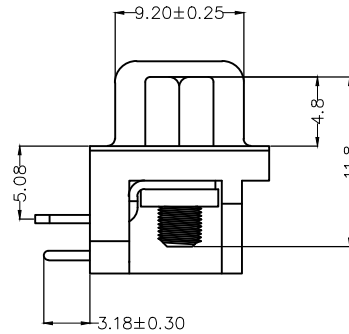
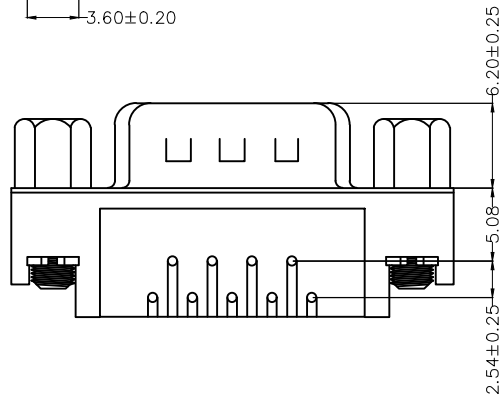
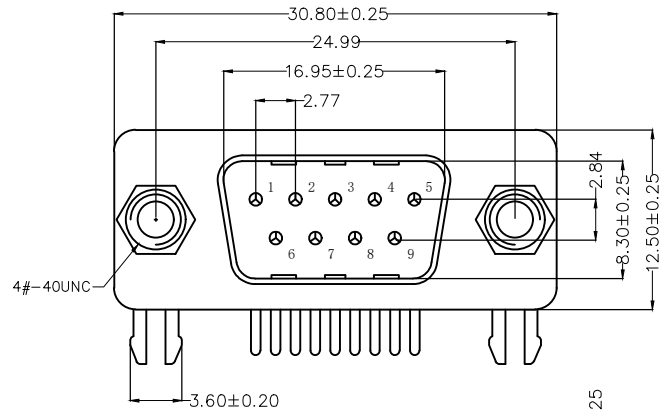


REV	LOCATIONS	DESCRIPTION	DATE	REVISER	APPD
1	△	Add spray code	13/Jan/25	NICK	LEO

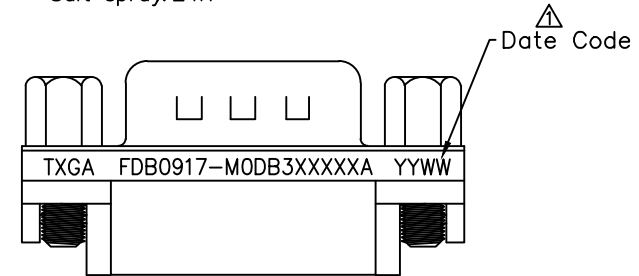


### Electrical

Current Rating: 3A AC(rms)/DC  
Voltage Rating: 250V AC(rms)/DC  
Contact Resistance: 30 mΩ Max  
Insulation Resistance: 1000 MΩ MIN  
Withstanding Voltage: 500V AC r.m.s  
Temperature Range—Operating: -55°C~+105°C

### Material and Plating

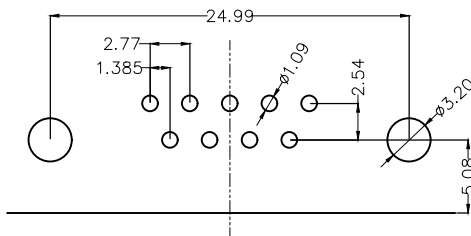
- Housing: PBT UL 94V-0
  - Contact: Brass/ Selective gold on contact area, tin on tail
  - Shell: Spcc/ Nickel Plated
  - Board Lock: Spcc/ Tin Plated
  - Screws: Copper Alloy/ Nickel Plated
- \*Salt spray: 24H




### Ordering Information

FDB 09 17 — M0 D B 3 XX XX X A  
1 2 3 4 5 6 7 8 9 10 11

1	Category FDB-D-SUB Connectors	2	Circuits 09-9Circuits	3	Distinction No. 17	4	Type M0-Male	5	Assembly Layout D-DIP	6	Entry Angle B-90° Angle
7	Plating 3-Selective gold on contact area, tin on tail	8	Thickness of Plating 00-Gold Flash 03-3μ" Custom plate available	9	Color-Resin BK-Black BU-Blue	10	Packaging L-Tube K-Tray	11	Distinction Type A-A Type		



Recommended P.C.Board Layout

THIRD ANGLE PROJECTION	GENERAL TOLERANCES (UNLESS SPECIFIED)		APPROVE BY FRANK	DATE 18/OCT/22	PART NO. FDB0917-M0DB3XXXXXA	ITEM NO. FDB0917	 Leader Of Industry	
	DESIGN UNITS Metric	X.±0.30	X'.±5'	CHECKED BY JACOB	DATE 18/OCT/22	TITLE D-SUB Connectors 9 Circuits 90° Angle Male(DIP)		REV 1
SCALE 5:1	SIZE A4	X.XX±0.15	.XX'±1"	DRAWN BY MATT	DATE 18/OCT/22	THIS DRAWING CONTAINS INFORMATION THAT IS PROPRIETARY TO TXGA INDUSTRIAL ELECTRONICS(S.Z)CO.,LTD AND SHOULD NOT BE USED WITHOUT WRITTEN PERMISSION		